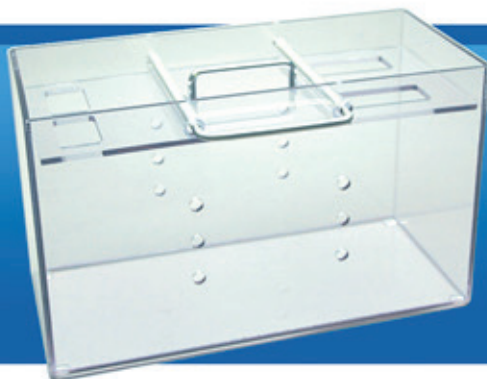


“WE CAN DO THIS
THE EASY WAY



OR THE HARD WAY.”

Animals Talk. **MAI**  ANIMAL HEALTH Listens.



Wild Child™ Chamber

McCULLOCH
Medical 

- The essential tool for safe and humane handling of fractious animals
- Easy, no-touch transfer of animals from cage to Wild Child Chamber
- Unique design and adjustable lid with four restraint levels and convenient access holes for injections

Anesthesia Chambers



- Designed for use with laboratory species, birds, feline, canine, ferrets, mink, rabbits, raccoons, skunks and reptiles
- Manufactured of clear, durable polycarbonate allowing for close observation of the patient during induction (particularly important because airway obstruction is possible)
- Versatile and practical, removable chamber dividers allow chambers to accommodate various size animals (excess chamber volume will slow the rise in anesthetic concentration and the onset of induction)
- Lid has a handle to aid in transportation of the animal from the cage to the induction area
- All ports are strategically located in multiple positions per chamber space
- Unlike acrylic chambers, may be cleaned with most antiseptics



Item #55205
Anesthesia Chamber, Mini
 Size: 10" x 5-1/2" x 5-1/2"



Item #55212
Anesthesia Chamber, Small
 Size: 16" x 7" x 7"



Item #55215
Anesthesia Chamber, Large
 Size: 21" x 7" x 7"



Item #55217
Anesthesia Chamber, Magnum
 Size: 23" x 9" x 9"



Item #55255
Anesthesia Chamber, Magnum - 4-Latch
 Size: 23" x 9" x 9"



Item #55235
Anger Management Chamber
 Size: 23" x 10" x 9"

Wild Child™ Chambers

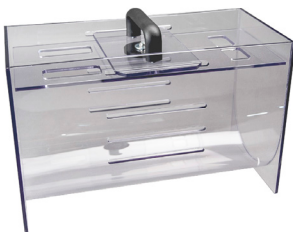


Wild Child™ and Wild Child™ II Chambers are the positive, professional management tool used to assist veterinarians and staff in handling fractious cats and other companion animals safely and humanely. Made of clear, durable polycarbonate allowing veterinarians and staff the ability to view the secured patient during procedures. Provides clinic staff a proven method in handling patients, reducing potential trauma to patient and staff. May be cleaned with most antiseptics (unlike acrylic chambers). An essential tool in any veterinary clinic.



Item #55220 Wild Child™ Chamber

- Easily transfer animal from cage to chamber without physically touching the patient
- Unique design, including a clear lid with a handle and horse shoe security bar adjusts to four different levels of restraint and convenient access holes for injections
- Size: 17" x 10-1/2" x 8"



Item #55230 Wild Child™ II Chamber

- Ultimate management tool with a concave bottom restricts movement of the animal
- Easy-to-use lid and cam latch design allows adjustment to three different levels and locks into place by simply turning the handle
- Size: 16" x 10" x 8"



To view our full product line visit www.maianimalhealth.com

Distributed by:

MAI Animal Health - UNITED STATES
 605 Pro-Ject Drive
 Elmwood, WI 54740
 1.800.447.0687
sales@maianimalhealth.com

MAI Animal Health - EUROPE
 4 Merlin Way
 Bowerhill Industrial Estate
 Melksham, Wiltshire SN12 6TJ
 +44 (0) 1225 791 184
sales.uk@maianimalhealth.com

MAI Animal Health - AUSTRALIA
 5-7 Burrundulla Road
 P.O. Box 1147
 Mudgee NSW 2850
 +61 (0) 2 6372 6622
sales.au@maianimalhealth.com

MAI Animal Health - NEW ZEALAND
 3A Marken Place
 Glenfield, Auckland 0627
 +64 (0) 9 444 2115
sales.nz@maianimalhealth.com